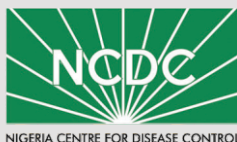


COVID-19



COVID-19 GUIDELINES ON RE-OPENING PLACES OF WORSHIP



GUIDELINES ON RE-OPENING PLACES OF WORSHIP

NCDC Toll-free Number: 080097000010

  @NCDCgov  CoviD-19.NCDC.gov.Ng



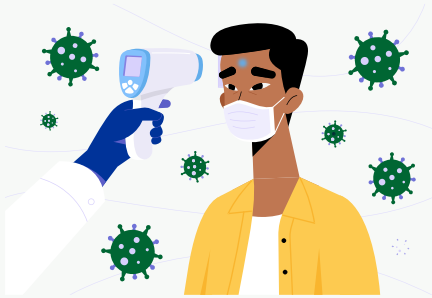
GENERAL GUIDELINES FOR RE-OPENING OF PLACES OF WORSHIP

- BEFORE OPENING, DISINFECT PLACE OF WORSHIP BY FUMIGATING THE ENTIRE BUILDING, CONGREGATION SPACE AND CAR PARKS. WIPE ALL SURFACES WITH DISINFECTING AGENT.
- DISINFECT REGULARLY TOUCHED SURFACES BY WASHING OR WIPING WITH DISINFECTANT.
- OPEN WINDOWS AND DOORS TO ENABLE AIR IN AND OUT.
- MAKE ADEQUATE PROVISION FOR SOAP, RUNNING WATER & HAND SANITIZER AT ENTRY POINTS.
- THERE SHOULD BE NO ENTRY WITHOUT FACE MASKS, PROVIDE DISPOSABLE FACE MASKS WHERE PRACTICABLE.
- TO HELP EDUCATE ON COVID 19, IT IS RECOMMENDED FOR PLACES OF WORSHIP TO HAVE PREVENTIVE MESSAGES FROM NCDC POSTED AT ENTRY POINTS AND AROUND PLACES OF WORSHIP.
- HOLY COMMUNION SHOULD BE PACAKAGED IN DISPOSABLE WRAPS.
- DRINKING WATER POINTS, PUBLIC TOILETS AND SALES OUTLETS MUST BE CLOSED FOR NOW.
- ABLUTION SHOULD BE DONE AT HOME, DO NOT SHARE KETTLES OR ANY PERSONAL ITEMS.
- RELIGIOUS LEADERS MUST MAINTAIN 2 METRES WHEN PRAYING OR COUNSELING AND AVOID BODY CONTACT WITH MEMBERS.
- PLACES OF WORSHIP SHOULD BE FREE OF CARPETS AND RUGS TO ALLOW EASY DISINFECTION OF THE FLOOR.
- PLACES OF WORSHIP MUST OPEN ONLY BETWEEN 5AM AND 8PM.
- CHORISTERS ARE TO GO HOME WITH THEIR ROBES.
- HIJABS ARE NOT TO BE SHARED.
- ATTENDANCE IN EVERY SERVICE SHOULD NOT EXCEED 1/3 OF SITTING CAPACITY OF THE AUDITORIUM TO ENABLE PHYSICAL DISTANCING, ALL OTHER MEMBERS SHOULD JOIN THE SERVICE VIRTUALLY.
- THE KEEPING OF REGISTERS FOR WORSHIPPERS AND ATTENDEES IS ENCOURAGED AT ENTRY POINTS WITH PROPER REGARD FOR HAND HYGIENE; HAND SANITIZERS SHOULD BE MADE AVAILABLE AND PERSONS ADVISED TO USE THEIR PERSONAL PEN. THIS MAKES CONTACT TRACING EASY SHOULD THE NEED ARISE.



COMPULSORY MEASURES FOR ALL RELIGIOUS GATHERINGS

Ensure temperature checks at point of entry, persons with temperature over 37.50C should be asked to leave & seek medical attention.



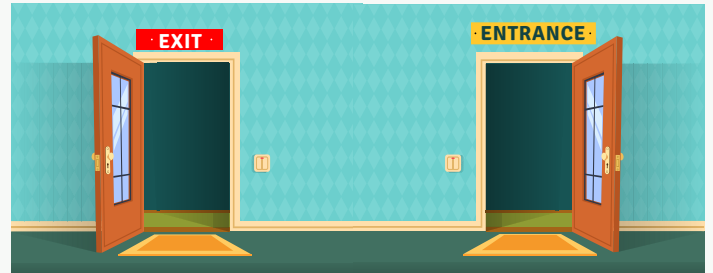
Have handwashing facilities in front of places of worship. For Muslims, encourage them to perform ablution (wudu) at home.



Clearly separate and mark areas in place of worship, to ensure 2 metres distance between people



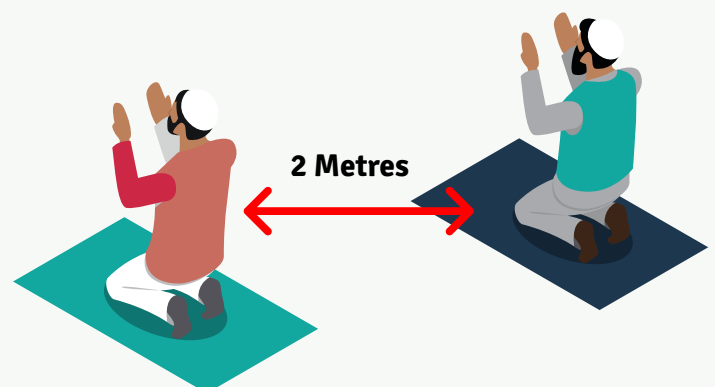
Ensure separate entry and exit points into places of worship and avoid overcrowding at entry and exit points



Offer alcohol-based hand sanitizers to worshippers as they enter the place of worship.



Inform worshippers to keep a distance of 2 metres from the nearest worshipper





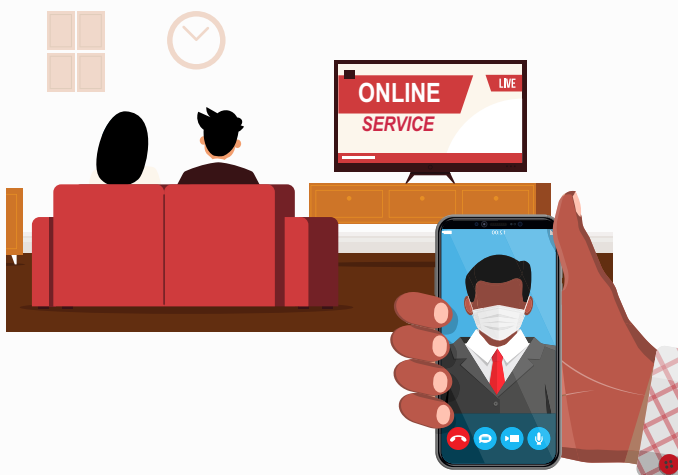
Ensure adequate ventilation in halls of worship, open windows, and doors for air to circulate in and out freely most especially when using air conditioners.



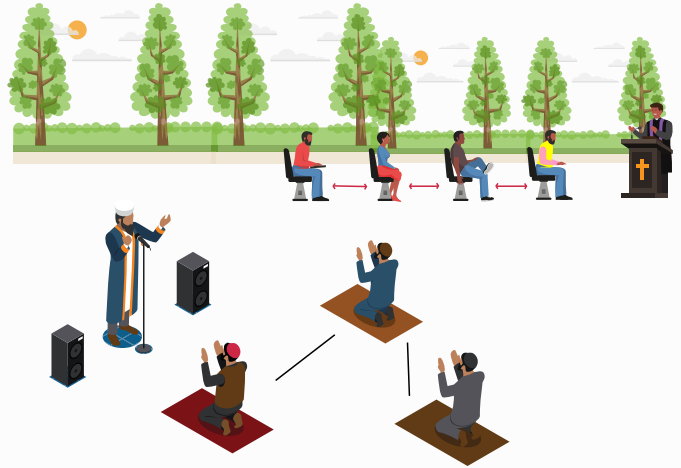
To abide by NCDC guidelines on mass gathering, places of worship may have to hold several worship & prayer sessions in a day with limited number of participants in each service according to available space.



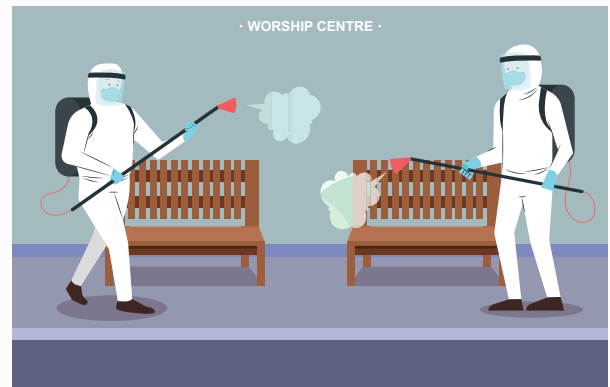
As much as possible, virtual meetings, preaching, and visits are encouraged in place of physical ones.



Encourage congregating in open spaces.



Establish a regular sanitizing or cleaning routine, surfaces frequently touched must be cleaned at intervals during worship



Always ensure and enforce the use of facemasks. Notices on use of facemask must be placed at entry points and within premises of places of worship.





At the beginning of worship, it is advised to give a short reminder on hygiene guidelines to prevent COVID, such as advising worshippers to cough into their elbows or tissues which must be discarded properly



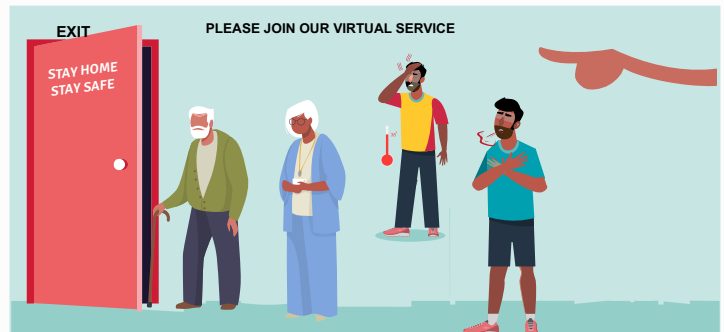
Shaking of hands, hugs and all physical contacts that form part of religious rituals are to be avoided for now.



Use personal religious items in places of worship, limit or avoid the use of shared items for now. such items include but not limited to Quran, Bible, prayer mats, hymn books, kettles for ablution, etc.



Encourage worshippers that are most vulnerable (i.e. adults 60 and over and people of all ages with underlying medical conditions) and those with symptoms of illness to stay at home.



Encourage electronic means of collecting tithes and contributions to limit contact with possible contaminated cash or cheques.



Sunday schools, Islamiyah, children Bible classes and all childcare classes are discouraged for now; children should be with their parents.

