

za 300m². Gutura mu buryo bw'imiryango 4 cg 8 mu nzu imwe ikomatanye bizako-meza gutezwa imbere. Buri mudugudu uzaba ufite ingo zibarirwa muri 550 zizaba zikikijwe n'ubutaka bwo guhingaho bungana nibura na hegitari 420.

Imyubakire y'amazu

Ubu mu Rwanda habarwa amazu agera kuri 2,800,000. Kugira ngo Abanyarwanda bazaba bagera kuri miliyoni 22.1 bazabone aho gutura mu mwaka wa 2050, haza-ba hakenewe amazu miliyoni eshanu n'igice (5.5) (birasaba kubaka amazu 150,000 buri mwaka). Aya mazu akenewe aramutse yubatswe nk'uko bisanzwe bikorwa ntabwo ubutaka bwaboneka. Igishushanyombonera gishya giteganywa ko hazaherwa ku kuvugurura utujagari dusanzwe no kubaka ubutaka butubatswe buherereye mu mbago z'imijyi n'udusanteri bisanzwe mbere yo kwagura imijyi no gukoresha inkengeru zayo.

Igishushanyombonera gishya cyashyizeho ubwoko bw'amazu bugera kuri buta-no n'ubucukike mu miturire hashingiwe ku cyiciro cya buri muji. Muri ibyo byiciro by'amazu harimo amazu asanzwe atageretse n'andi y'amagorofa yubakwa ageretse rimwe cyangwa kenshi kugera ku maremare cyane bitewe n'ubushobozi bw'abatara-ge bo muri buri muji. Uburyo bwo kubaka inzu ndende zizamurwa ariko zitubaki-we rimwe buremewe (incremental housing development) ariko inyubako igakomeza igasa neza nk'iyarangiye kugirango uko ubushobozi bubonetse bwo kwagura inzu, ishuri cyangwa ivuriro bikorerwe hejuru yayo bidasabye kwagura mu butam-bike. Inzu ndende ishobora gukorerwamo ibintu bitandukanye harimo guturwamo hejuru no gukorerwamo ubucuruzi hasi (mixed-use apartment).

Mu mijyi ikomeye, inzu z'ubucuruzi n'ubutegetsi, parikingi, imihanda n'ibindi bigom-ba gukoresha ubutaka bw'ikuzimu (Underground development).

Iki gishushanyombonera gishya kiragaragaza ko ishoramari mu kubaka amazu yo guturwamo n'imiryango myinshi no gukoreramo ubucuruzi rizatezwa imbere mu buryo bufatika hakoresha inyubako ndende.

Gutwara abantu n'ibintu

U Rwanda ruri mu bihugu bifite imihanda myinshi ku isi kubera ko rwahanze imihan-da myinshi yagiye ikurikira imiturire. Ibi bigatuma gufata neza imihanda mu Rwanda bigoye kandi bihenze cyane.

Igishushanyombonera gishya giteganywa ko imihanda n'ibindi bikorwa remezo bishy-irwa aho bikenewe cyane kandi hateganyirijwe gutura cyangwa ahari ibikorwa bi-komeye by'inganda.

Igishushanyombonera gishya gitanga igisubizo ku buryo bwo kwihutisha ingendo hongerwa ibikorwa remezo by'inzira cyane cyane izo ku butaka, mu kirere no mu mazi.

Hazubakwa imihanda ya gari ya moshi ihuza u Rwanda n'ibihugu bituranye na rwo ndetse n'inzira zihuta zihuzira Kigali n'imijyi igaragiye n'iyunganyira umujyi wa Kigali.

Ubuhanzi n'ubworozi

Inzitizi nyamukuru ku buhanzi bw'u Rwanda ni:

- ▶ Igabanuka ry'ubutaka bwo guhinga busimbuzwa iyindi mikoreshereze: Iki-gere-ranyo cya hegitari 0.4 z'ubutaka kuri buri muryango.
- ▶ Umusaruro muke ukeneye kongerwa ku buryo buhagije kugirango igihugu ki-haze mu biribwa ariko kinasagurire amasoko.
- ▶ Umubare munini cyane w'abaturage bari mu buhanzi gakondo mu gihe ahub-wo hakenewe umubare muto w'abahinzi bakora kinyamwuga.
- ▶ Ikiyubako cyo guhuza imirima mito cyane idatanga umusaruro ukeneye. Hake-newe guhuza ubutaka no kunoza imiturire yo mu cyaro kugirango tuzamure umusaruro w'ubuhinzi.

Igishushanyombonera cy'imikoreshereze y'ubutaka no kubyaza ubutaka umusaru-ro kerekana ko kugirango abanyarwanda babashe kwihaza mu biribwa, banasaguri-re isoko, hagomba gukorwa byibura ibi bikurikira:

- ▶ Kurinda ubutaka bw'ubuhinzi byibura bungana na kilometero kare 12,433 (km²) (bingana na 51.5% y'ubutaka bw'igihugu) byaba byiza bukongerwa bukagera kuri 15,000km², bugahuzwa bugakoresheza neza mu bikorwa by'ubuhinzi gusa.
- ▶ Abakora ubuhinzi ntibagomba kurenga 30% by'abaturage nkuko bitegany-ijwe n'icyerekezo 2050 kugirango byibura buri muhinzi agere ku kigereranyo cy'ubutaka bungana na hegitare 1.5 akoresha mu buhanzi.
- ▶ Imiturire itatanye igomba kunozwa, abaturage bagatura mu mudugudu yagen-we no mu mijyi ibonye kugirango guhuriza hamwe ubutaka bw'ubuhinzi bi-zagerweho.
- ▶ Guteza imbere imihingire ya kinyamwuga n'imbuta z'indobanure, kuhira imya-ka imusozi, gukoresha imashini mu buhanzi, gukora amaterase y'indinganire ku



misozi yose ibangamirwa n'ibibazo by'isuri, guteza imbere ubuhinzi bwo mu mijyi n'ubuhinzi ngerekerane buzamuka mu kirere (vertical farming) n'ibindi.

- ▶ Ubuhanzi buzakorera mu gihugu hose ariko bwiganje cyane cyane mu bice by'igi-hugu by'iburaziruzaba, amajyepfo n'amajyaruguru. Imisozi ifite ubuhanze buri he-juru ya 55% kandi yambaye ubusa yo mu burengerazuba biteganyijwe ko ishobora guterwaho ibihingwa ngengabukungu nk'icyayi n'ibindi.
- ▶ Mu rwego rwo kurinda ubutaka bw'ubuhinzi, buri Karere kazagira igishushanyom-bonera gicukumbuye kigena ku buso bwose bw'Akarere imikoreshereze y'ubutaka n'uburyo bwo kububaza umusaruro, bitari mu gice cy'umujyi gusa bitandukanye n'uko byari bisanzwe. icyo gishushanyombonera cy'imikoreshereze y'ubutaka ku rwego rw'Akarere kizagaragaza neza ubutaka bugenewe ubuhinzi kandi kubukore-sha ikitari ubuhinzi cyangwa ubworozi ntikizaba cyemewe by'umwihariko.

Ibidukikije

Iterambere ry'imibereho n'ubukungu by'u Rwanda rishingiye ku bidukikije n'umutungo kamere nk'ubutaka, amazi, ikirere, amabuye y'agaciro n'ibinyabuzima bitandukanye.

Igishushanyombonera gishya kirerekana ibi bikurikira bigomba kwitabwaho no gukorwa mu kubungabunga ibidukikije, umutungo kamere n'imihindagurikire y'ikirere:

- ▶ Kubungabunga amashyamba ahari, kongeramo ibindi biti mu rwego rwo kongera ubucucike bwayo, gucunga amashyamba kinyamwuga no kuyabyazwa umusaruro ku buryo bufatika
- ▶ Gutera amashyamba ku misozi ihanamye, ni ukuvuga cyane cyane ubutaka buri ku buhanze burenze 55% bugera kuri hegitari 1554 (Ha) z'imisozi idateye ishyamba.
- ▶ Ibishanga, imigezi n'ibiyaga n'imikandara yabyo bizakomeza kubungwabungwa uko bikwiye.
- ▶ Imisozi ihanamye, hejuru y'ubuhanze bwa 30-50% ishobora gukorerwaho ibikorwa bitandukanye birimo n'inyubako zikomeye ariko habanje gukorwa inyigo zikwirir-ye, zigaragaza uko bizakorwamo ku buryo bidashyira ubuzima bw'abantu mu kaga.
- ▶ Ibirwa byinshi by'igihugu biteganyirijwe gukoresheza mu bikorwa biyanywe n'ubukera-rugendo no kubungabunga urusobe rw'ibinyabuzima.
- ▶ Ibishanga n'ubutaka bukikije ibiyaga buzakorera inyigo zimbitse hakagaragazwa imikoreshereze y'ubutaka iberanye na buri gishanga na burikiyaga, cyane cyane hibandwa ku guteza imbere ubuhinzi n'ubukerarugendo.
- ▶ Hagomba gushyirwaho uburyo amazi y'imvura azajya afatwa ndetse agatungany-wa, cyane cyane mijyi na site zo guturaho mu cyaro.

Ubukerarugendo

Urwego rw'ubukerarugendo ruzaba rugizwe n'ubukerarugendo bwo muri za parike, ubu-kerarugendo bwibanda ku kwakira ibiganiri, inama mpuzamahanga n'ibikorwa bitandu-kanye n'imikino yo ku rwego mpuzamahanga; ubukerarugendo rw'abaza kwivuriza mu Rwanda; ubukerarugendo rw'abaza kwiga mu Rwanda; ubukerarugendo bwo mu mazi; ubukerarugendo bwo mu mijyi no mu cyaro; n'ubukerarugendo bw'ahantu ndangam-ateka. Ubukerarugendo na bwo buzibanda mu gukoresha ubutaka buto ariko bukazana inyungu nyinshi ku Gihugu.

Umusaruro uva mu bukerarugendo uzava kuri miliyoni Magana ane z'amadolari ya Amer-ika (400M US\$) ugere kuri miliyoni Magana inani z'amadolari ya Amerika (800M US\$) mu mwaka wa 2050.

Ingeri z'ubukerarugendo zizatezwa imbere by'umwihariko ni izi zikurikira: ubukera-rugendo bushingiye ku iyobokamana mu Turere twa Ruhango na Nyaruguru (Kibeho), ubukerarugendo bushingiye ku muco mu Karere ka Nyanza, ubukerarugendo mu Ntara y'Iburaziruzaba, Amajyaruguru n'iburengerazuba (bushingiye ku biyaga, ku mateka, ku mu-

tungo kamere wa za pariki, ku misozi nyaburanga, n'ibindi). Buri gishushanyombonera cy'Akarere kizarushaho kugaragaza ahageranye n'ubukerarugendo muri buri Karere.

Iterambere ry'inganda

Inganda na serivisi bigomba gutera imbere cyane ku buryo bufatika kuko ari byo ubukungu bw'igihugu buzaba bwubakiyeho. Abanyarwanda barenga 70% bazaba bakesha imibereho serivisi zitandukanye.

Inganda zizakomeza gushyirwaho mu buryo bwiza bukurikije ibiberanye na buri Karere. Igishushanyombonera gishya kiragaragaza ko hakenewe ibyanya by'inganda mu Turere 13 gusa harimo 2 zo mu muji wa Kigali. Utwo Turere ni Gasabo, Kicukiro, Rwamagana, Bugesera, Muhanga, Musanze, Rubavu, Rusizi, Huye, Nyagatare, Kirehe, Karongi na Ny-abihu. Ingano ntarengwa y'ibyanya by'inganda zose mu gihugu ntigomba kurenga he-gitare 2900 kugeza mu mwaka wa 2035 na hegitare 8800 kugera mu mwaka wa 2050. Ku tundi Turere tutahawe ibyanya by'inganda byemewe, hateganywa gushyirwaho in-ganda n'ntoya zidahumanya ikirere zigendanye n'ibiva mu buhanzi n'ubukorikori.

Ibikorwa remezo by'ingufu, amazi, amashuri, amavuriro, inyubako n'ibibuga bya siporo, ikoranabuhanga n'ibindi

Ibi bikorwa byose byagenewe ubutaka imbere mu mijyi 101 yateganyijwe no mu midu-gudu igera ku 3000 yo mu cyaro. Bigomba gushyirwa ahabigenewe. Uburyo busanzwe bwo kubikwirakwiza mu misozi yose bwagaragaye nk'uburyo butarambye. Imbaraga nyinshi zikwiye gushyirwa mu gutuza abaturage neza ahateganyijwe bakagenda baha-sanga ibikorwa remezo by'ibanze. Ibi bizatuma iterambere ry' imijyi, ubuhinzi n'iteram-bere ry'inzira nzego zose bigerwaho mu buryo bugaragara. Ingano y'ubutaka bukwiye kubakwaho na buri rwego rw'ishuri cyangwa ivuriro bwashyizweho muri iki gishusha-nyombonera gishya. Kubaka amashuri n'amavuriro bigomba gukorwa neza inyubako zubakwa zijya hejuru.

UBURYO BWO GUSHYIRA MU BIKORWA IGISHUSHANYOMBONERA CYO KU RWEGO RW'IGIHUGU

- ▶ Hateganyijwe ko amategekako n'inzego zishinzwe gushyira mu bikorwa igishushany-ombonera gishya bigomba kuvugururwa no kunozwa;
- ▶ Mbere yo gukora igishushanyombonera cy'ahantu aho ari ho hose cyangwa umushinga munini uguye gukoresha ubutaka, Ministeri ifite ubutaka mu nshingano zayo ibinyujije mu rwego rw'igihugu Rushinzwe Ubutaka izajya ibanza ibisuzume, harebwa niba byubahirije ibiteganyijwe byose.
- ▶ Mbere yo kugenera ingengo y'imari ibikorwa n'imishinga by'inzego za Leta hazajya habanza hasuzumwe niba bikurikije ibyo iki gishushanyombonera gishya gitegan-ya.
- ▶ Guteza imbere no koroshya ishoramari ry'amasosiyete azaba yubakira rimwe inzu nyinshi bigomba gushyirwamo imbaraga, kimwe no guteza imbere uburyo bwo kubumbira abantu hamwe bakubaka mu buryo bukomatanyije. Kubaka bazamuka na byo bizashyirwamo imbaraga.
- ▶ Ikurikirana ry'imikoreshereze y'ubutaka rizifashisha ikoranabuhanga ku buryo un-yuranyije n'ibiteganywa n'iki gishushanyombonera gishya azatahurwa hakiri kare.

NI IKI KIGIYE GUKURIKIRAHO?

Nyuma yo kwemeza igishushanyombonera cy'imikoreshereze no kubyaza umusaruro ubutaka ku rwego rw'igihugu hagiyeye gukurikiraho ibi bikurikira:

- ▶ Kuvugurura amategekako kugira ngo ahuzwe n'iki gishushanyombonera gishya.
- ▶ Gushyiraho ibishushanyombonera by'Uturere twose n'icy'Umujyi wa Kigali. Igi-shushanyombonera cyo ku rwego rw'Akarere kizajya cyerekanwa imikoreshereze y'ubutaka iteganyijwe mu Karere kose mu mijyi ikagize no mu byaro.
- ▶ Gushyiraho uburyo bwo gusuzuma imishinga yose yaba ikorwa ubu n'imishya izakorwa kugira ngo hajye harebwa niba yubahirije igishushanyombonera gishya mbere yo guhabwa ingengo y'imari.
- ▶ Gushyiraho uburyo bw'ikoranabuhanga bwo kugenzura uko ubutaka bukoreshwa mu gihugu.

ABATURAGE N'INZEGO BARASABWA IKI?

- ▶ Abaturage, inzego za Leta zose n'izabikorera barasabwa gukurukiza ibikubiye muri iki gishushanyombonera cy'imikoreshereze y'ubutaka no kubyaza umusaruro ubu-taka.
- ▶ Imiryango itegamiye kuri Leta irasabwa gufasha mu bukangurambaga ku gishusha-nyombonera gishya.



IKIGO GISHINZWE IMICUNGIRE
N'IMIKOreshereze Y'UBUTAKA
MU RWANDA

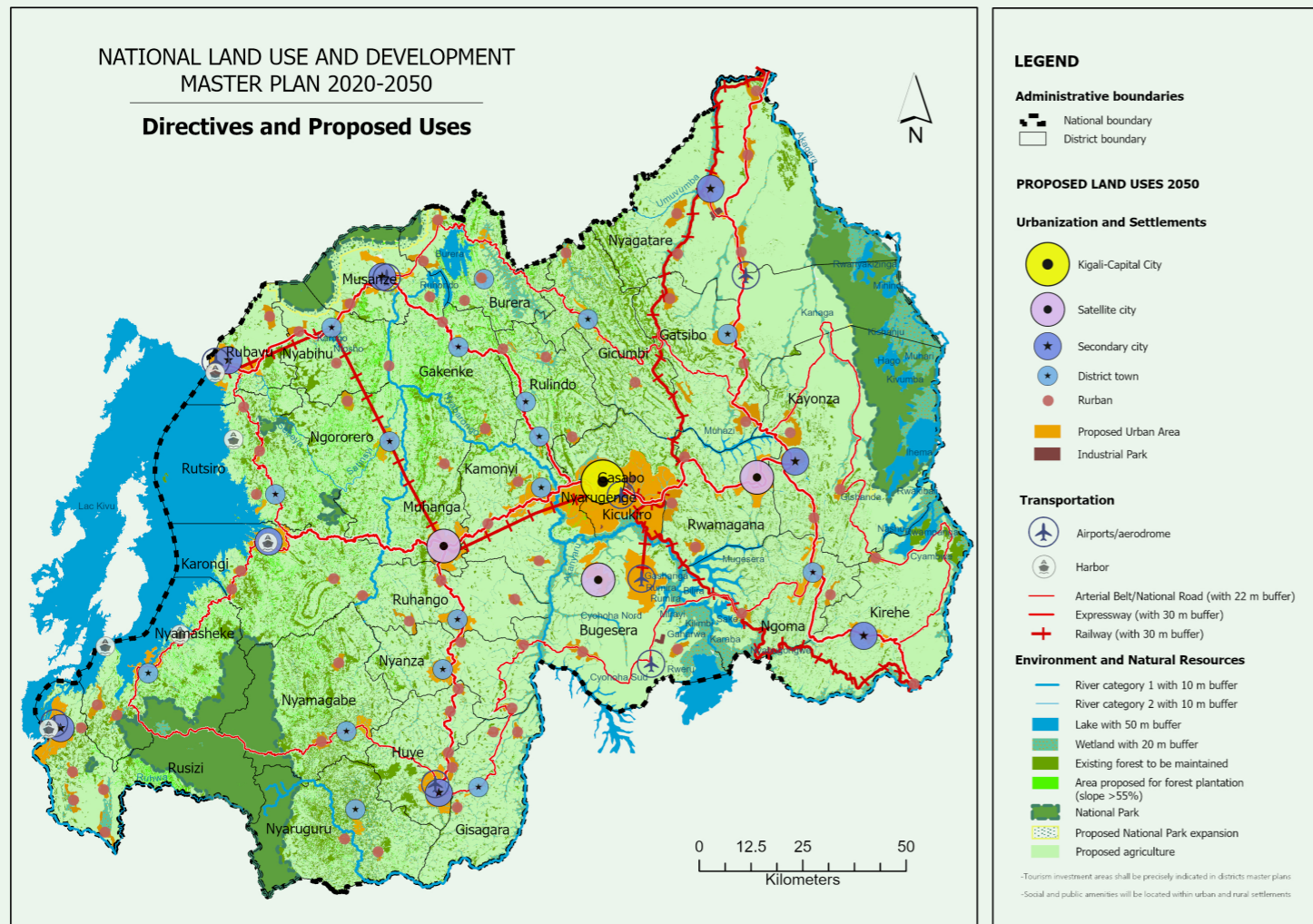


Igishushanyombonera cy'imikoreshereze no kubyaza umusaruro ubutaka mu cyerekezo

2020-2050



E-mail: info@rlma.rw | Website: www.rlma.rw
Twitter: @Lands_Rwanda | Facebook: @LandsRwanda
Dashboard: rwandalanddashboard.rlma.rw:8083/lais
Land Information Portal: <https://landinformation.rlma.rw/>
Hotline: 2142 | Mobile app: *651#



INTANGIRIRO

Ubutaka ni umurage w’Abanyarwanda, abakurambere, abariho ubu ndetse n’abaza-bakomokaho. Ubutaka ni umusingi Igihugu cyubakiraho ubukungu n’amajyambere yacyo ibihe byose. Igihugu gicunga kikanakoresha ubutaka neza kiba cyubaka ibizaramba.

U Rwanda rwashyizeho igishushanyombonera cy’imikoreshereze no kubyaza ubutaka umusaruro cya mbere mu mwaka wa 2011 kerekana imirongo migari yo gushyira mu bikorwa icyerekezo 2020.

Nk’uko ibarurishamibare ribigaragaza, U Rwanda rufite abaturage barenga miliyoni cumi n’ebiyiri n’igice, n’umuvuduko w’ubwiyongere ungana na kabiri n’ibice bine ku ijana (2.4%) buri mwaka (abana basaga 300,000 bavuka buri mwaka). Ibi bikaba birugira kimwe mu bihugu bya Afrika bifite umuvuduko munini w’ubwiyongere bw’abaturage kurusha ibindi.

Igishushanyombonera gishya giteganywa ko u Rwanda ruzaba rutuwe n’abaturage miliyoni makumyabiri n’ebiyiri n’ibihumbi ijana mu mwaka wa 2050 mu gihe ingamba zo kuringaniza imyaro zaba zashyizwe mu bikorwa. Ubu bwiyongere bw’abaturage buzagira ingaruka ku mikoreshereze y’ubutaka no ku musaruro uva ku butaka kuko umubare w’abaturage kuri kilometero kare imwe uzaba ku baturage 518 ukagera ku baturage 887.

IGISHUSHANYOMBONERA CY’IMIKORESHEREZE NO KUBYAZA UBUTAKA UMUSARURO KU RWEGO RW’IGIHUGU NI IKI?

Igishushanyombonera cy’imikoreshereze no kubyaza umusaruro ubutaka ku rwego rw’Igihugu ni isesengura ryerekana uko ubutaka bw’Igihugu bugomba gukoreshwa

neza mu gihe kirekire kugira ngo butange umusaruro ukwiye n’iterambere rirambye ku nzego zose z’Igihugu. Igishushanyombonera gishingira ku muvuduko w’ubwiyongere bw’abaturage n’icyerekezo cy’iterambere ry’Igihugu ry’igihe kirekire.

Iki gishushanyombonera gishya cyemejwe n’Inama y’Abaministriri yateranye kuwa 29 Nyakanga 2020, kigamije gushyira mu bikorwa icyerekezo cy’iterambere 2050 Igihugu cy’u Rwanda cyihaye. Intego yacyo ni ukugaragaza uko ubutaka buzakoreshwa n’uko buzabazwa umusaruro guhera mu mwaka wa 2020 kugeza mu mwaka wa 2050 hakurikijwe ubwiyongere bw’abaturage, umuvuduko w’iterambere mu nzego zose ndetse n’intego Igihugu cyihaye kugeraho mu mwaka wa 2050.

Mu gutegura iki gishushanyombonera gishya, habayeho inama nyungurabitekerezo nyinshi ku nzego zitandukanye ku rwego rw’Igihugu, hamwe n’ikusanyabitekerezo n’amakuru mu Turere twose tw’Igihugu hakusanywa ibitekerezo ku byifuzo by’Uterere n’abaturage batwo ku igenamigambi rishingiye ku miterere yihariye ya buri Karere n’ibyo babona byakwibandwaho byafasha mu iterambere rya buri Karere. Abaturage, inzego z’abikorera ndetse n’imiryango itegamiye kuri leta nabo batanze ibitekerezo kuri iki gishushanyombonera.

IGISHUSHANYOMBONERA GISHYA KIJE GUKEMURA IBIHE BIBAZO?

Igishushanyombonera gishya cyo ku rwego rw’Igihugu kizakemura ibibazo by’ingenzi bikurikira biri mu mikoreshereze y’ubutaka mu Rwanda:

- Ikibazo cy’imikoreshereze mibi y’ubutaka aho bamwe babukoresha batitaye ku bikorwa bindi bibukeneye;
- Ikibazo cy’imiturire imaze gukwirakwira ahantu hose kigatuma gukora igenamigambi ry’ibikorwaremezo bigorana kandi bihenda cyane, kigatera ibindi bibazo bigendanye no kutagira ubutaka buhagije bw’ubuhinzi buhujwe, ubw’ubworozi n’ubw’amashyamba, biteza imyuzure, isuri n’inkangu z’ubutaka n’imihindagurikire y’ikirere.

INZEGO Z’UBUKUNGU ZIBANZWEHO

Mu gishushanyombonera gishya, hashyizwemo ingamba n’imirongo ngenderwaho igomba gukurikizwa na buri rwego rw’ubukungu rukoresha ubutaka ndetse na buri mu nyarwanda.

Inzego zasuzumwe mu gishushanyombonera gishya ni izi zikurikira:

- Imyubakire, imijyi n’imiturire mu cyaro;
- Inganda;
- Ubuhinzi n’ubworozi;
- Umutungo kamere n’ibidukikije;
- Ubukerarugendo;
- Ubwukorezi no gutwara abantu;
- Ibikorwaremezo;

IBIKUBIYE MURI IKI IGISHUSHANYOMBONERA CYO KU RWEGO RW’IGIHUGU

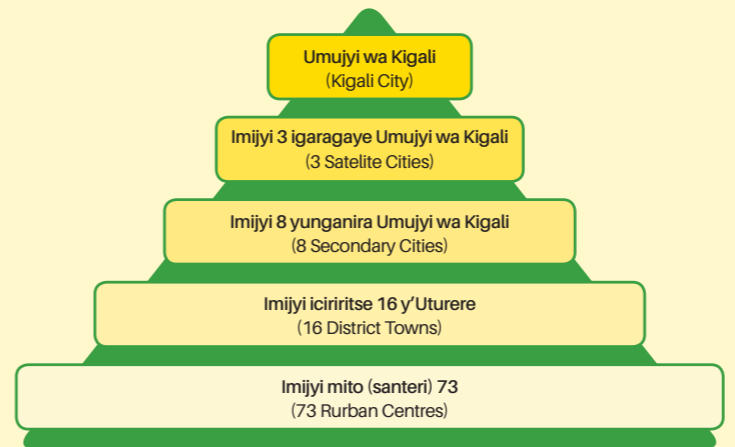
Inzego z’ubukungu zahawe ubutaka zizakoresha

Buri rwego rw’ubukungu bw’Igihugu bitewe n’ibizakenerwa rwagenewe ubuso (hagabanywa 26,338 km²) bw’ubutaka buzakoreshwa mu cyerekezo 2050 mu buryo bukurikira:

- **Ubuhinzi n’ubworozi:** 12,433 km² (51.5% habazwe ubutaka gusa bw’Igihugu);
- **Amashyamba:** 7,725km² (32% by’ubutaka bw’Igihugu);
- **Imiturire, ibikorwa remezo byose hamwe n’imihanda:** 3,980 km² (15.1%);
- **Amazi n’ibishanga bikomeye n’imbago zabyo:** 2,200 km² (8.5%). Ibi bishobora kubazwa umusaruro mu bikorwa bibungabunga urusobe rw’ibinyabuzima n’ubukerarugendo.

Gutuzwa abantu mu mijyi no mu byaro

- Abanyarwanda hafi 18.4% bari batuye mu mijyi kugeza mu mwaka wa 2019. Gutura mu mijyi bikaba bikomeje kwiyongera kubera amahirwe y’umurimo ahari, icyakora bigomba gukorwa neza kugira ngo imijyi ikomeze kuba igicumbi cy’iterambere.
- Hashingwiye ku mubare w’abaturage na serivisi zizaba zikenewe mu guteza imbere imibereho y’abatuye mu mijyi bazaba bageze ku kigero cya 70 ku 100 (70%) y’Abanyarwanda bose mu mwaka wa 2050 (Miliyoni 15.4) kandi imijyi yose y’Igihugu (101) igomba gukoresha ubuso butarenze kilometero kare 1754. Igishushanyombonera gishya cyashyizeho ibyiciro bitanu by’imijyi:



- Hateganyijwe ko **Umujyi wa Kigali (Kigali City)** uzakomeza kuba umurwa mukuru w’Igihugu kandi ugakomeza gutezwa imbere mu ngeri zose. Hateganyijwe ko mu mwaka wa 2050 uzaba ufite abaturage babarirwa hagati ya miliyoni 3 na miliyoni 3.8 bari ku bucucike bw’abaturage buri hejuru ya 9000 kuri kilometero kare imwe (>9000 /km²).
- Hari kandi imijyi itatu igaragiye Umujyi wa Kigali iwukikije kandi iwunganira ari yo **Muhanga, Bugesera na Rwamagana**. Buri mujyi uzaba ufite abaturage bari hagati ya 650,000 na 1,000,000. Umujyi wa Muhanga uzaba ari umujyi w’ubucuruzi butandukanye no gutunganya amabuye y’agaciro n’ibindi. Umujyi wa Bugesera uzateza imbere cyane ubwukorezi n’inganda naho Umujyi wa Rwamagana uzaba umujyi wo guteza imbere umusaruro w’ubuhinzi. Kubera umuvuduko munini w’ubwiyongere bw’abaturage bagana muri iyi mijyi igaragiye uwa Kigali bakurikiye ubutaka buhen-

mutse no kubaka byoroshye, ni ngombwa gushyira imbaraga zihariye mu kuyobora iterambere ry’imiturire muri iyi mijyi. Ubucucike bw’abaturage kuri kilometero kare imwe bugomba kuba hagati ya 8000-9000 (8000-9000 /km²).

- Imijyi umunani yunganira umujyi wa Kigali kandi ihereyeye hafi y’imbibi z’igihugu ari yo **Musanze, Rubavu, Rusizi, Huye, Nyagatare, Karongi, Kirehe na Kayonza** mu kwegereza abaturage bahaturiyeye iterambere ryihuse mu nzego zitandukanye. Buri mujyi muri icyo uzaba ufite abaturage bari hagati ya 250,000 na 650,000. Iyo mijyi izateza imbere ubucuruzi bw’imbere mu Gihugu n’ubwambukiranywa impaka. Ubucucike bw’abaturage kuri kilometero kare imwe bugomba kuba hagati ya 7000-8000 (7000-8000 h/km²).
- Imijyi iciriritse 16 y’Uterere dusigaye aho buri mujyi ufatwa nk’ikicaro cy’ako karere na yo izakomeza gutera imbere mu buryo bwiza burangwa n’imiturire yegeranye itanga umusaruro. Iyo mijyi ni Nyanza, Ruhango, Kamonyi, Gisagara, Nyamagabe, Nyaruguru, Ngoma, Gatsibo, Gicumbi, Rulindo, Gakenke, Burera, Rutsiro, Nyabihu, Ngororero, Nyamasheke. Buri mujyi uzaba ufite abaturage bari hagati ya 100,000 na 250,000 bari bucucike bw’abaturage kuri kilometero kare imwe buri hagati ya 6000-7000 (6000-7000 /km²).
- Imijyi mito (santeri) yo mu cyaro 73. Iyi mijyi izakomeza gukura no gufasha cyane icyaro kugurisha umusaruro ukomoka ku buhinzi mu bice by’icyaro biyizengurutse. Buri mujyi muto uzaba ufite abaturage bagera kuri 25,000. Mu Turere twose izi santeri zirahari kandi zizafashwa gukura mu buryo buboneke butabangamira ubutaka bw’ubuhinzi buzikikije. Santeri zatoranjwe zizatezwa imbere nk’imijyi mito ni izi zikurikira:

N	AKARERE	UMUJYI MUTO/SANTERE
INTARA Y’AMAJYEPFO		
1	Muhanga	Remera
2	Huye	Rusatira, Arrete-Kinazi, Karama
3	Nyanza	Busoro, Ntyazo, Butansinda,
4	Ruhango	Kinazi, Byimana, Gitwe-Buhanda
5	Kamonyi	Remera-Rukoma, Musambira, Mugina
6	Nyaruguru	Cyahinda, Munini,
7	Nyamagabe	Kaduha, Gasaranda
8	Gisagara	Mamba, Gikondo, Kibirizi, Save,
INTARA Y’IBURASIRAZUBA		
9	Rwamagana	Muyumbu-Nyakariro, Nyagasambu, Karengwe
10	Bugesera	Ruhaha, Rweru
11	Nyagatare	Matimba, Karangazi, Rwimiyaga, Mimuri, Rukomo
12	Kayonza	Kabarondo, Rwinkwavu, Karubamba-Video
13	Kirehe	Rusumo, Nasho
14	Ngoma	Rukira, sake
15	Gatsibo	Kiramuruzi, Muhura, Ngarama
INTARA Y’AMAJYARUGURU		
16	Rubavu	Kabumba
17	Rusizi	Giheke, Bugarama, Muganza, Mibirizi, Mushaka
18	Karongi	Birambo, Shyembe, Mugonero, Mubuga
19	Rutsiro	Kivumu, Kayove, Musasa
20	Nyabihu	Sashwara-Jenda, Vunga, Gasiza
21	Ngororero	Kabaya
22	Nyamasheke	Ntendezi, Bushenge
INTARA Y’AMAJYARUGURU		
23	Musanze	Byangabo, Remera-Ruhondo
24	Gicumbi	Rutare, Gatuna
25	Rulindo	Bubangu, Kinihira, Base
26	Burera	Gahunga-Kinoni, Kirambo, Cyanika
27	Gakenke	Ruli, Kivuruga

Izindi santeri zitagaragara muri iyi mbonerahamwe yo hejuru zashyizwe mu cyiciro cy’imiturire yo mu midugudu.

Icyaro kizasagarana imiturire yo mu midugudu ku baturage bazaba basigaye ku kigereranyo cya 30% (miliyoni 6.6). Imidugudu myinshi izahuzwa ikazagera ku 3000 igakoresha ubutaka butarenze kilometero kare 1241 (km²) kugirango haboneke ubutaka bwo guhingaho mu buryo buhujwe. Hagati y’umudugudu n’undi hagakiye kubamo byibura kilometero 4 (km). Buri Kagari kazagira umudugudu umwe cyangwa ibiri gusa yo gutuzaho abantu. Imiturire itatanywe mu cyaro izirindwa abantu batara neza mu midugudu ufite ibikorwa remezo byibanze byose. Ibi bizakorwa hagamiye gutura ku butaka buto. Iki banza cyo guturaho ntabwo kigomba kuren-